

ST. THOMAS’ SCHOOL, SUNARI
Half Yearly Examination (2024-25)
Class- VII
Subject- Biology sample paper

Max. Time- 2 Hour

M.M – 80

Name: _____

Roll no. _____

General Instructions:

- Read all the questions carefully before answering.
- All the questions are compulsory (7 questions are there in each section A and B).
- Don't copy questions in answer script. Pay attention to the correct numbering of answers.
- Maintain good handwriting and pay attention to the margins & neatness.
- The intended marks for questions or part of questions are given in the brackets [].

Section – A (40 Marks)

Question 1. Choose & write the correct answer:

[1 x 10=10]

- i. During the process of photosynthesis, producer take carbon di oxide and they release.....
- | | |
|------------|-------------|
| a) oxygen | b) nitrogen |
| c) alcohol | c) Oxygen |
- ii. Which of is the organism related to kingdom
- | | |
|------------|-------------|
| a) Monera | b) Animalia |
| c) Plantae | d) Protista |
- iii. What is the primary function of roots in plants?
- | | |
|-------------------|-------------------------------------|
| a) Photosynthesis | b) Absorption of water and minerals |
| c) Reproduction | d) Support leaves and flowers |
- iv. Which form of energy is stored in food?
- | | |
|--------------------|-------------------|
| a) Kinetic energy | b) Thermal energy |
| c) Chemical energy | d) Nuclear energy |
- v. What does a lever help to do?
- | | |
|--------------------|---|
| a) Increase weight | b) Decrease energy |
| c) Increase speed | d) Increase force or change its direction |

Question 2. Complete the following sentences: [1 x5=5]

- 1-Green plants are called since they synthesise their own food.
- 2-The food synthesised by the plants is stored as.....
- 3-In photosynthesis solar energy is captured by the pigment called.....
- 4-During photosynthesis plants take in and release.....
- 5-Proteins contain.....

Question 3. Correct the following false statements by writing the correct statement. [1 x 5=5]

- (1) During heavy exercise the breathing rate of a person slows down.
- (2) Plants carry out photosynthesis only during the day and respiration only at night.
- (3) Frogs breathe through their skins as well as their lungs.
- (4) The amount of air available on the mountains is more than that available on the ground.
- (5) Glucose breaks down into lactic acid in the absence of oxygen.

Question 4. Match the items given in Column A with a most appropriate ones in Column B and rewrite

the correct matching pairs:

[1 x 5=5]

Column A

Dust allergy
Latex Enters
dust particle
Ruminants
Store urine

Column B

Skin Allergy
through nose Pollen
Urethra
Cow, Dear
Asthama

Question 5. Name the following:

[1 x 5=5]

- a) Tissue found behind the skin.
- b) Two examples of Bryophytes.
- c) Name two tests used to diagnose allergy.
- d) Name conducting tissues in Plants .
- e) Mode of nutrition in Fungi.

Question 6. Write one example of each:

[1 x 5=5]

- i. Excretory organ in human body
- ii. Heterotrophs
- iii. Oviparous
- iv. Sexual reproduction
- v. Insectivorous plant

Question 7. Write down the name of the disease caused by the following bacteria

[1 x 5=5]

- Campylobacter.
- Clostridium perfringens.
- E. coli.
- Listeria.
- Norovirus.

Section – B (40 Marks)

Question 8. Draw diagrams of the following given term.

[2 x 2= 4]

- i. Parts of plant body
- ii. Human heart

Question 9. Define the following terms:

[2 x 3= 6]

- a) Photosynthesis
- b) Respiration
- c) Monocot Plants

Question 10. Answer the following short questions:

[2 x 4= 8]

- i. How does reproduction take place in Amoeba?
- ii. What characteristics of Pteridophytes?

- iii. What are different functions of excretory system?
- iv. Identify the functions of circulatory system in our body..

Question 11. Give reason of the following:

[2 x 2= 4]

- i. Why do plants known as autotrophs?
- ii. Why is it necessary to drink water at regular interval of time?

Question 12. Distinguish between the following:

[2 x 2= 4]

- i. photosynthesis and respiration
- ii. Carnivores and omnivores

Question 13. Application based question:

[2.5x2=5]

i. The human body contains a large number of cells A which are very long and branched and look like electric wire. The longest branch of cell is B where as there are many small branches C. Any two A cells do not joint to one another completely in the human body. There is a Junction D between every pair of adjacent a cell through which electric impulses can pass.

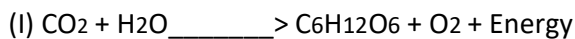
- a) What are cell A?
- b) What is the name of branch B and branches C?
- c) What is the junction D known as.

ii. Why are Whales not grouped in fishes?

Question 14. Answer the following long questions:

(3 x 3= 9)

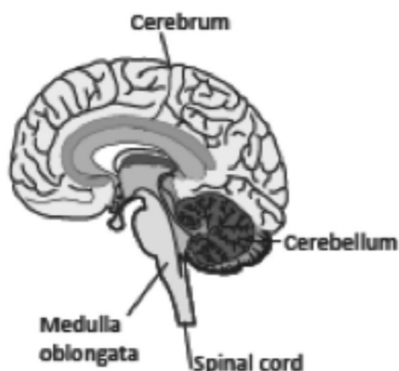
i. Consider the following chemical reaction which takes place in the different organisms/ tissue under various condition.



- a. Name one living being those resond to equation(I).
- b. Name one product which formed during this equation.(II).
- c. Which equation is it photosynthesis/respiration?

ii. Draw the diagram o f plant cell with labeling and write three lines about it.

iii. Do labeling of the given diagram and answer the following questions:



(a) What is it?

(b) Write its parts.

© What is the role of this organ in our body?